

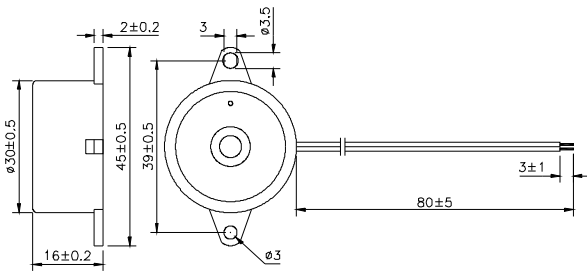
PK-27A35W PF-27A35W PL-27A35W



Specification

Model Number	PK-27A35W	PF-27A35W	PL-27A35W	Unit
Resonant Frequency	3.5 ± 0.5			KHz
Operating Voltage	3 ~ 24			VDC
Rated Voltage	12			VDC
Sound Pressure Level (Min)	95 at 30cm at Rated Voltage			dB
Current Consumption(Max)	10 at Rated Voltage	15 at Rated Voltage	15 at Rated Voltage	mA
Tone Sweep(Pulse)Rate at Rated Voltage (Hz) ± 20 %	Constant	Fast Pulse 3.0	Slow pulse 1.2	Hz
Operating Temperature	-20~+70			□
Storage Temperature	-30~+80			□

Dimensions



Unit □ mm

Voltage □ Current □ Sound Pressure

