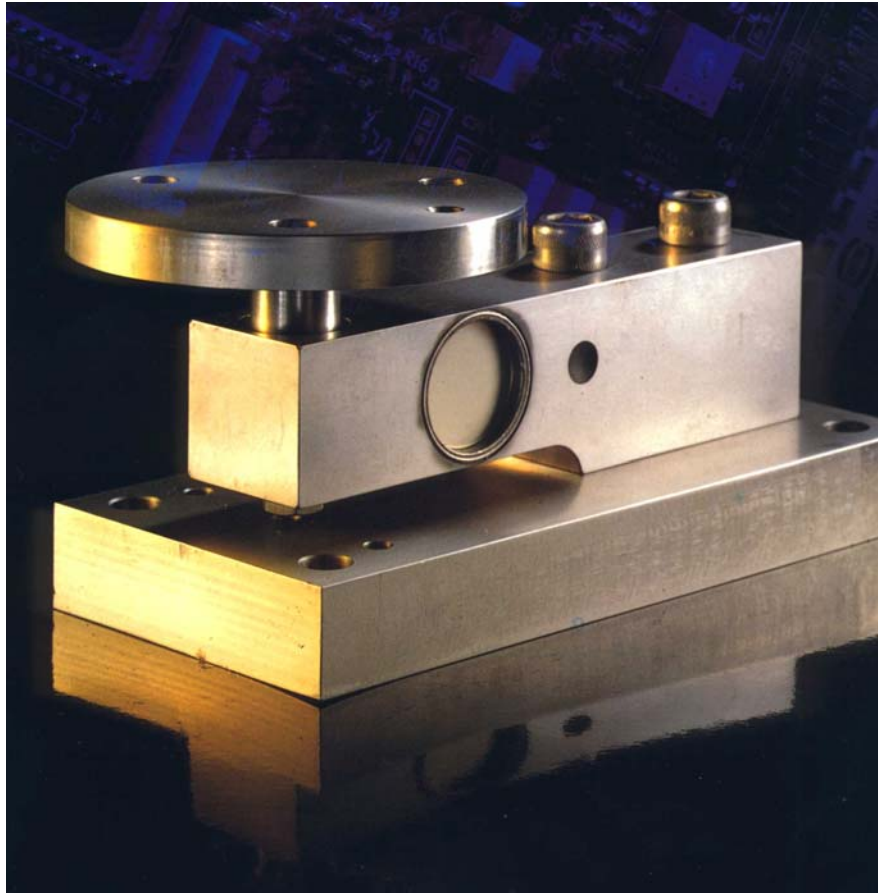




Procon Engineering

(A Division of National Oilwell Varco UK Limited)



Type 7188 Shear Beam Load Cell

low profile

use for compression or tension

all stainless steel construction

certified EEx ia IIC T6

bi-directional loading

wide range of mounting kits

fully hermetically sealed

three year warranty



technical specification sheet

Type 7188 Shear Beam Load Cell

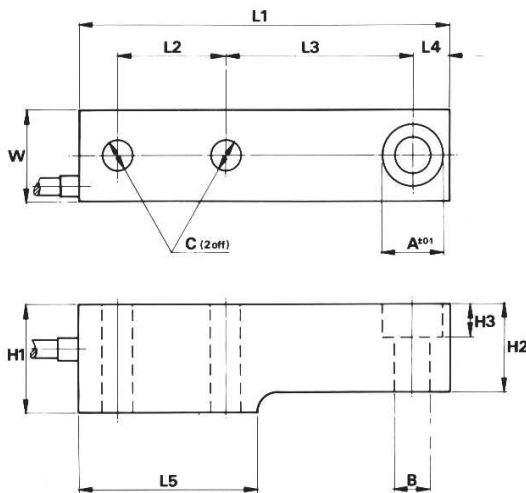
SPECIFICATION

Ranges:	500kg to 20,000kg – see Table 1
Non Linearity (terminal):	± 0.03% max
Hysteresis:	0.03%
Repeatability:	0.01%
Input Resistance:	400 ohms nominal
Output Resistance:	350 ± 1.5 ohms
Excitation Voltage:	Recommended 10V. Maximum 16V
Sensitivity:	2mV/V ± 0.1%
Zero Load Output:	± 1% max.
Temperature Range:	Compensated: -10 to +60°C. Operating: -30 to + 80°C
Temperature Effect on Zero Load Output:	± 0.002%/°C
Temperature Effect on Span:	± 0.001%/°C
Creep:	0.03% (30 minutes)
Overload Rating:	Safe: 100%. Ultimate: 200%
Safe Side Load:	100%
Cable:	5m of 4 core screened cable with pigtail end Other lengths up to 15m.
Material and Finish:	Stainless Steel, 17-4-PH
Protection Class:	Hermetically sealed

TABLE 1 All bolts used must be to ISO grade 12-9

Type	Range kg.	L1	L2	L3	L4	L5	H1	H2	H3	W	Dia. A	Dia. B	Dia. C	Weight kg.	Rec bolt size	Tightening torque Nm (ftlb)	Deflection mm	
6188 – 05	7188 – 05	500	170	45	90	15	80	45	36-5	12	36-5	25-5	14	13	1-8	M12	150(110)	0-1
6188 – 1	7188 – 1	1000																0-1
6188 – 2	7188 – 2	2000																0-18
6188 – 5	7188 – 5	5000																0-38
6188 – 10	7188 – 10	10,000	200	55	100	25	95	80	46	16	48	38-2	21	22	3	M20	750(500)	0-6
6188 – 20	7188 – 20	20,000	240	60	127	28	120	70	54	20	58	45-0	25	26	5	M24	1200(800)	0-7
			320	90	160	40	180	90	65	25	70	57-2	34	32	11	M30	2500(1600)	1-0

OUTLINE DRAWINGS



Procon Engineering's policy is one of continuous product enhancement. We therefore reserve the right to incorporate technical modifications without prior notification. E & O E.

Procon Engineering
Vestry Estate
Sevenoaks
Kent, UK
TN14 5EL

tel: +44 (0)1732 781300
fax: +44 (0)1732 781311
e-mail: sales@proconeng.com
web site: www.proconeng.com

7188 WIRING	
Yellow	Excitation Positive
Green	Excitation Negative
Red	Signal Positive
Blue	Signal Negative
Screen	Not connected to loadcell

